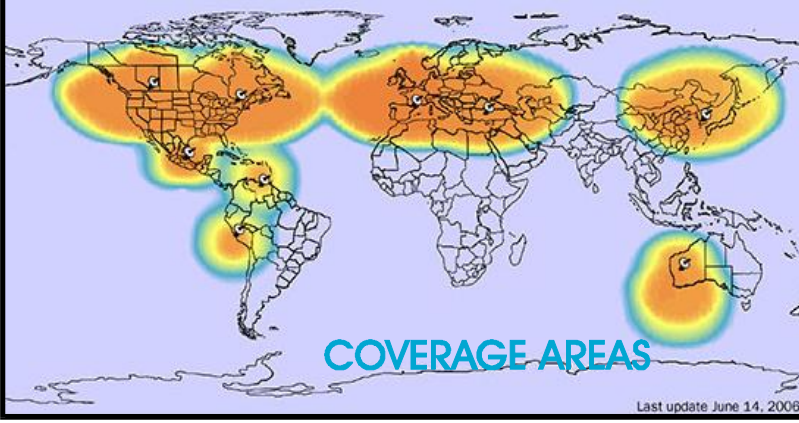


Rectifier Buddy



— CATHODIC RECTIFIER MONITOR —

FEATURES	BENEFITS
<ul style="list-style-type: none"> ● <i>Real time clock:</i> Transmits rectifier voltage & amperage values at scheduled intervals. ● <i>AC Power monitor:</i> Transmits AC power notification on AC power interruptions ● <i>DC back-up power alarm:</i> Transmits DC power notification on DC power loss. ● <i>Rectifier performance monitor:</i> Transmits notifications if dc voltage or amperage threshold levels are exceeded ● <i>Data Warehousing:</i> Logs rectifier data to a secure web site for customer retrieval. 	<ul style="list-style-type: none"> ● Proven Satellite based communications. ● Standard transmission costs throughout the total coverage area. ● No roaming charges. ● Monthly contracts or licenses are not required, ● Minimal installation requirements. ● Antenna and all components built in a Nema 4 - 10"x8"x6" enclosure. ● Factory and/or field programable.

SCREEN SHOT

(user programmable setpoints)

The screenshot displays the Acutec Unit Manager software interface. On the left, a table lists registered units. The main area is titled 'Lubicon (R&A) Configuration' and contains several sections:

- Unit Information:** Unit Name: Lubicon (R&A), ESN: 201040. Buttons for New, Delete, Download, and Upload are present.
- SetPoints:** A table with columns: Channel, Description, Low Setpoint, High Setpoint, Units of Measure, and Maximum Value.
- Clock Setup:** Fields for Current Time (06/05/06 12:28:35), Next Time Programming Unit?, Daily Trigger, Start Time, Frequency, Monthly Trigger, and Start Day.

A physical unit is shown on the right side of the interface.

SPECIFICATIONS

INPUT CHANNELS:

Input voltage: 0 to 120 AC
DC voltage: 0 to 100 VDC
DC amperage: 0 to 50 Amp
Battery backup level: 0 to 13 vdc

Four discrete: event driven alarms.
(normally open or normally closed).

CURRENT DRAW:
240 mA at 12 Vdc.

PROTECTION:

Digital channels: opto isolated,
Analog channels: suppression diodes.
AC fuse protection.

ENVIRONMENTAL:

Temperature rating: -45c to +85c

PHYSICAL:

Weight: 8lbs
Enclosure: Fiberglass 10x8x6 Nema 4X

COMMUNICATIONS:

GlobalStar satellite

ANTENNA: Built in - 3dB

APPROVALS:

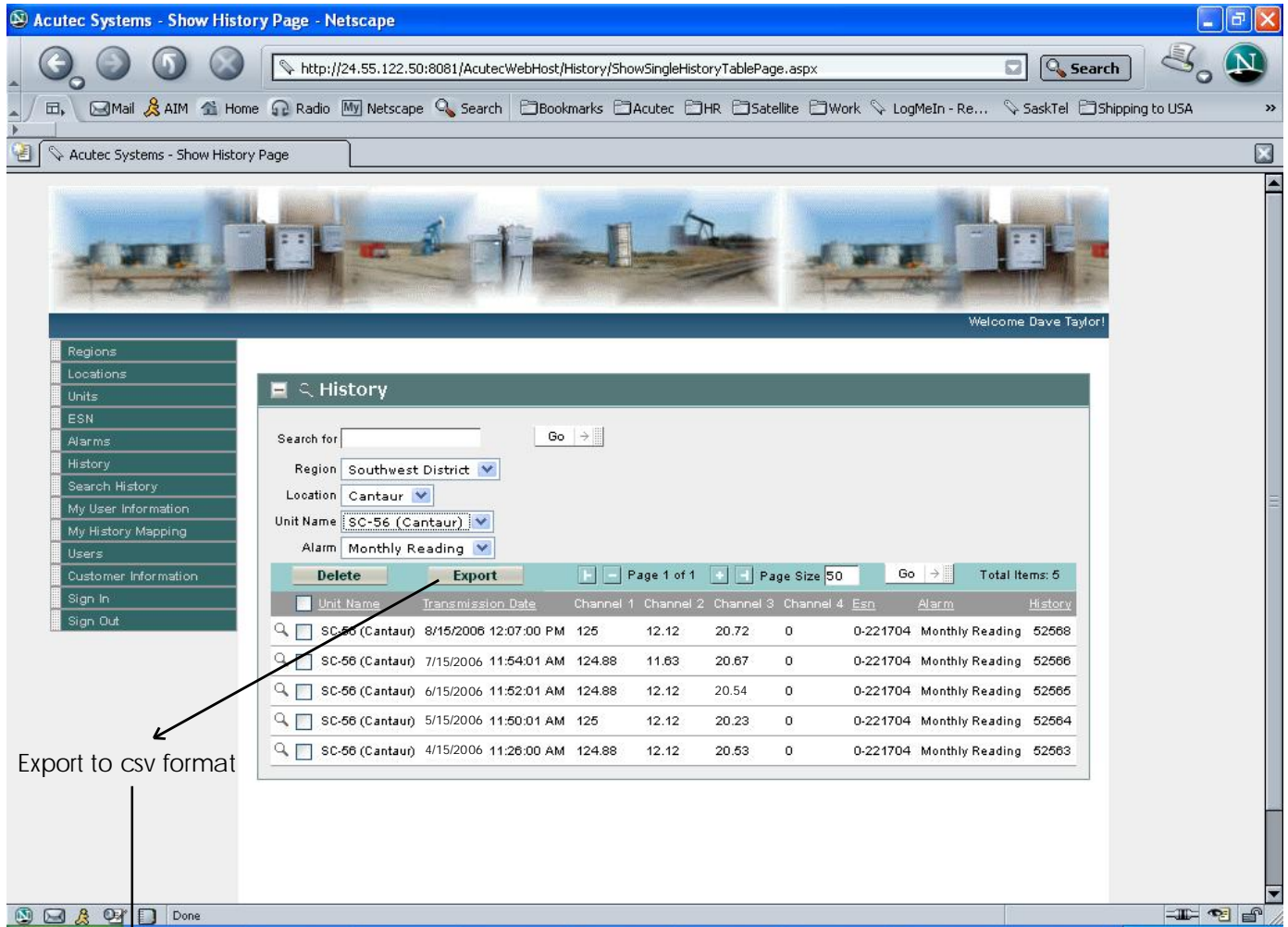
This device complies with Part 15 of the FCC Rules.
Operation is subject to the condition that this device
does not cause interference.

"This (Class A/Class B)* digital apparatus complies with
Canadian ICES-003." "Cet appareil numérique (de la
classe A/de la classe B)* est conforme à la norme
NMB-003 Canada."

ACUTEC
Systems Ltd.

109 Main Street
Lampman Sask
Tel: 306 487 2536
Fax: 306 487 2776
www.acutec-ltd.com

Web host screen shot:



Export to csv format

Unit	Transmit time	AC voltage	DC voltage	DC amperage	spare ID	Event	Region	Location
SC-56 (Cantaur)	8/15/2006 12:07	125	12.12	20.72	0 0-221704	Monthly Reading	Southwest District	Cantaur